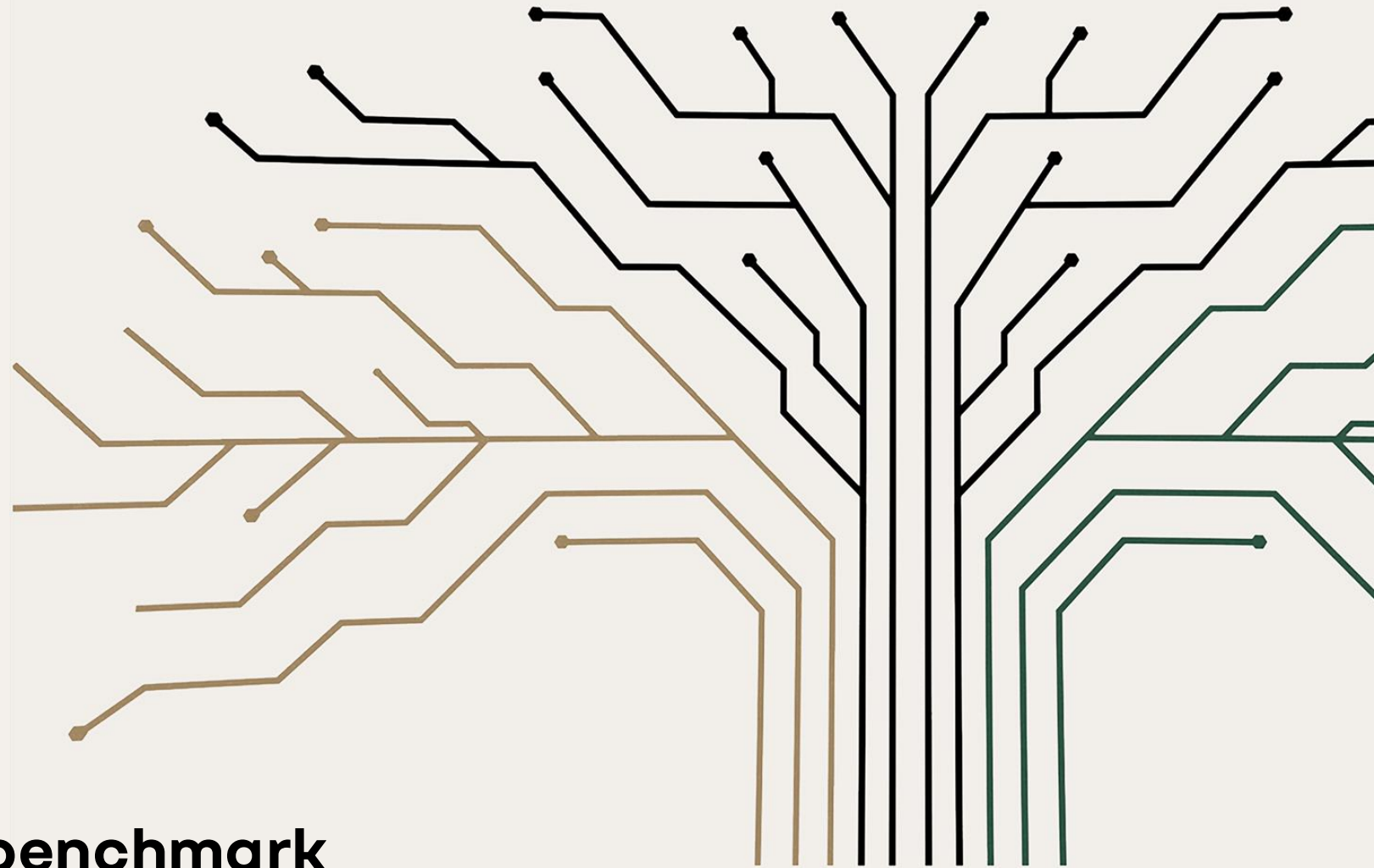


Renault Group



Shortlisted editors benchmark

a comparative analysis of solutions for carbon footprint calculation & roadmap planning

2025

**SUSTAINABILITY
TOOLBOX FOR DEALERS**



Benchmark | identification & evaluation of solutions proposed by editors

		Functional coverage								Budget				Key references	
		Carbon footprint	CSRD	Self-assessment	Best practices action plan	ROI	Benchmark	Dashboards	Label ESG/ certif.	User-friendly	K€				
										RG		Dealers			
										Setup	Licence	Setup	Licence		
Integrated tools	Tennaxia	✓	✓	✓	✓	✓	✓	✓		++	70	50-100	3-7	10-20	Stellantis, Forvia, Michelin
	inteliam	✓	✓	✓	✓		✓	✓	✓	+		15-50		2,5-6,2	Specific auto after-market
	ClimatePartner	✓	✓		✓			✓	✓	++	1-5		1-3	<10	VW, BMW
	act21 GROUPE BAKER TILLY	Via API partner tool	✓	✓	✓	Yes outside the tool	✓	✓		-				5,5 For 1500 employees	Jean Rouillé
	Position Green	✓	✓		✓		✓	✓		+	25	118		105-1618	BOS Automotive
	greenly	✓	✓	✓	✓	✓	✓	✓		++	14	39		14-32	Aptiv, Forvia
Dedicated tools	SWEEP	✓	✓	✓	✓		✓			+++				10 for starter pack	MFS, Car Lovers
	carbo	✓			✓		✓			++					Bodemer
	planA	✓	✓		✓					++					BMW dealers
Label	Certified Positive Company			✓				✓		+++		2 / month		125€	Not in auto sector
	ecovadis	✓					✓	✓	✓	+++				689€ (label) + 199€ (carbon)	

Benchmark | Best-in-class solutions on each functional and technical criteria

	Carbon footprint	CSR	Renault centralized leaderboard	Self-assessment	Action plan	Benchmark	Easy of use	Countries coverage	Easy data collection	Deployment modalities & adapted support	Deployment speed
Best #1	 		 	 	 	 	 	 	 		
Best #2	 	 	 	 		 	 	 	 	 	

- Act 21 is better solution for Carbon footprint & CSR
- Sweep & Greenly are leading technical criteria
- Tennaxia & Greenly are the only one to propose financial economics on action plan
- Tennaxia offers the most native tool, saving development time and increasing deployment speed

We have decided to focus only on **dedicated and integrated tools** that include at least the **carbon footprint** and **CSR** modules.

In scope +



Position Green

planA

greenly



Out of scope -



- Only focus on certification / label
- Not a priority for the project

ecovadis

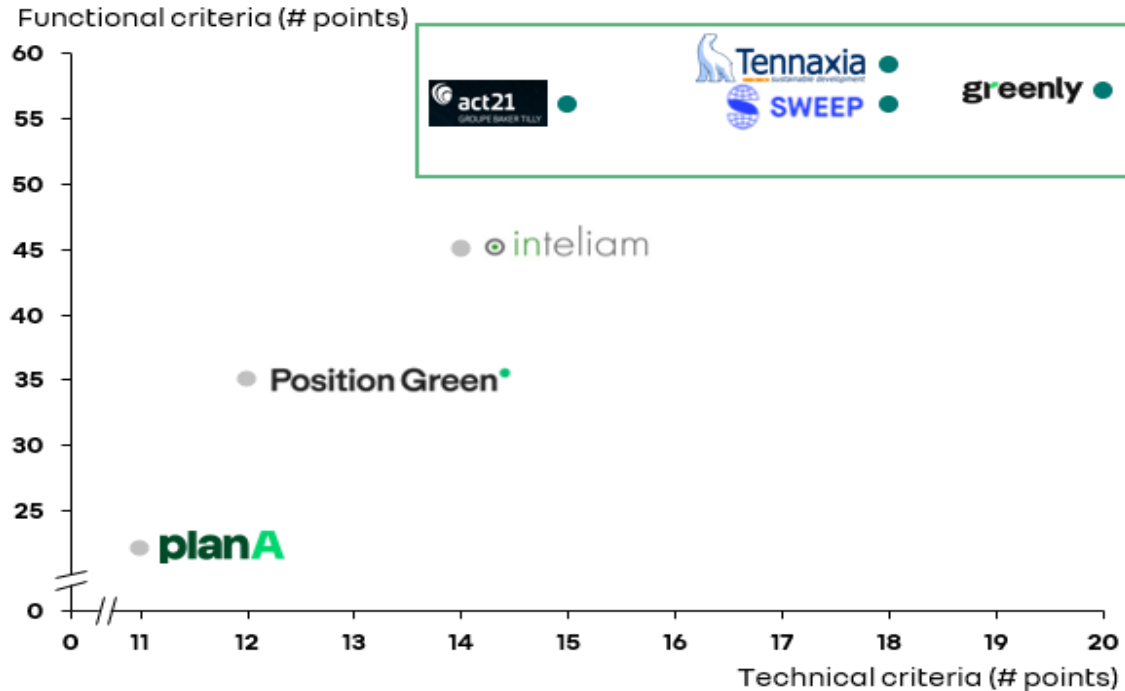


- Only focus on carbon footprint
- Limited geographical coverage (French scope)

Notation | rating of functional, technical and pricing proposals of identified editors

	Tennaxia sustainable development	greenly	SWEEP	act21 GROUPE BAKER TILLY	inteliam	Position Green	planA
Grading	59 (Functional) 18 (Technical)	57 (Functional) 20 (Technical)	56 (Functional) 18 (Technical)	56 (Functional) 15 (Technical)	45 (Functional) 14 (Technical)	35 (Functional) 12 (Technical)	22 (Functional) 11 (Technical)
Partner	EY (Consulting)		Bearing Point (Con.)	Goodwill management (Consulting)	SGS (Consulting) C-More (tech)		Unity (Consulting)
+	<ul style="list-style-type: none"> Action Plan w/ financials Large geographical coverage Strong references in dealership 	<ul style="list-style-type: none"> Action plan w/ financials Designed tool for SMEs Large language coverage w/ AI live translation 	<ul style="list-style-type: none"> Deployment methodology Good Starter Pack for small dealers Ability to send self-assess. campaigns Action plan w/ financials 	<ul style="list-style-type: none"> Self-assessment entirely adaptable to Renault's needs Easy to use & understand for small dealers Strong references in dealership 	<ul style="list-style-type: none"> Local language consultant (SGS) Carbon & CSRD Small Dealers specificities 	<ul style="list-style-type: none"> Clear platform on CSRD & carbon footprint IA assistant for CSRD 	<ul style="list-style-type: none"> Strong support & assistance Multiple languages REX BMW network
-	<ul style="list-style-type: none"> Tennaxia Doc. & Support only in FR & EN 	<ul style="list-style-type: none"> Less flexible to integrate RG knowledge Few references in automotive/ none in dealership business 	<ul style="list-style-type: none"> Low flexibility to add a new language to the tool Ergonomics a bit complex 	<ul style="list-style-type: none"> Limited language coverage for technical support No dynamic action plan in the platform 	<ul style="list-style-type: none"> Not All-in-1 platform No economics, no planning 	<ul style="list-style-type: none"> Solution for big companies No self-assess. 	<ul style="list-style-type: none"> External asset & platform building development
Dealers	<ul style="list-style-type: none"> 23,050 € 42,750 € 	<ul style="list-style-type: none"> 14,800 € 32,800 € 	<ul style="list-style-type: none"> 21,600 € 27,600 € 	<ul style="list-style-type: none"> 10,150 € 15,150 € 	<ul style="list-style-type: none"> 23,949 € 53,084 € 	<ul style="list-style-type: none"> 105,550 € 1,618,436 € 	<ul style="list-style-type: none"> 65,950 € 108,650 €
RG							
Set-up	168,500 €	14,625 €	175,000 €	130,400 €	27,600 €	25,000 €	NA
Run	20,000 €	39,350 €	61,600 €	49,600 €	60,477 €	118,197 €	5,000 €
References	Emil Frey, Stellantis, Forvia	Aptiv, Forvia, Steer Automotive Group	Car Lovers	Jean Rouyer, Sepamat, Norauto	Nexus, Wolf lubricants	BOS Automotive	BMW

Functional/technical notation



All shortlisted editors

- Propose a live & running **all-in-one SaaS platform**
- Cover **all required modules**
- Have a **robust deployment approach**
- Offer **central monitoring for RG**

Key differentiators



- + Action Plan w/ financials
- + Strong deployment support with EY
- + Large language coverage, with AI translation for data & report
- + Strong references in dealership business (Emil Frey)
- Strong dependency to EY for integration & local deployment



- + Action plan w/ financials
- + Designed tool for SMEs
- + Large language coverage, with AI live translation for support
- Less flexible to integrate RG knowledge (carbon, self-assessment)
- Few references in automotive / none in dealership business



- + Deployment methodology (dealer cohort per language, reasonable planning, local human support with Bearing Point)
- + Attractive Starter Pack for small dealers, all modules except CSRD
- + Ability to send self-assessment campaigns
- + Action plan w/ financials
- Low flexibility to add a new language to the tool
- Ergonomics a bit complex



- + Self-assessment entirely adaptable to Renault's needs
- + Easy to use & understand for small dealers
- + Strong references in automotive / dealership business (Jean Rouyer)
- Limited language coverage for technical support (FR ENG ESP only)
- No dynamic action plan in the platform (in their product roadmap)

Pricing | For dealer groups



Fees for dealers

0-4 sites	Carbon footprint	€ 2,750	€ 4,000	€ 10,000	€ 5,900
	Self-assessment	Included	€ 2,150	Included ¹	Included
	Action plan	Included	Included in SA*	Included	€ 2,000
	Benchmark	€ 500	Included in SA*	Included	Included
	Sub-total without CSRD	€ 3,250	€ 6,150	€ 10,000 (Starter Pack)	€ 7,900
	CSRD	€ 1,100	€ 4,000	€ 8,000	€ 6,900
	Total license	€ 4,350	€ 10,150	€ 18,000 (Pro Plan)	€ 14,800
	Setup cost	€ 18,700	/	€ 3,600	/
5-9 sites	Carbon footprint	€ 4,725	€ 4,000	€ 10,000	€ 8,900
	Self-assessment	Included	€ 2,150	Included ¹	Included
	Action plan	Included	Included in SA*	Included	€ 3,000
	Benchmark	€ 500	Included in SA*	Included	Included
	Sub-total without CSRD	€ 5,225	€ 6,150	€ 10,000 (Starter Pack)	€ 11,900
	CSRD	€ 1,890	€ 4,000	€ 8,000	€ 9,900
	Total license	€ 7,115	€ 10,150	€ 18,000 (Pro Plan)	€ 21,800
	Set-up cost	€ 18,700	/	€ 3,600	/
10-20 sites	Carbon footprint	€ 7,900	€ 4,500	€ 10,000	€ 10,900
	Self-assessment	Included	€ 2,150	Included ¹	Included
	Action plan	Included	Included in SA*	Included	€ 4,000
	Benchmark	€ 500	Included in SA*	Included	Included
	Sub-total without CSRD	€ 8,400	€ 6,650	€ 10,000 (Starter Pack)	€ 14,900
	CSRD	€ 3,160	€ 4,500	€ 8,000	€ 11,900
	Total license	€ 11,560	€ 11,150	€ 18,000 (Pro Plan)	€ 26,800
	Set-up cost	€ 18,700	/	€ 3,600	/
20+ sites	Carbon footprint	€ 14,750 - € 22,000	€ 6,500	€ 10,000	€ 12,900
	Self-assessment	Included	€ 2,150	Included ¹	Included
	Action plan	Included	Included in SA*	Included	€ 5,000
	Benchmark	€ 500	Included in SA*	Included	Included
	Sub-total without CSRD	€ 15,250 - € 22,500	€ 8,650	€ 10,000 (Starter Pack)	€ 17,900
	CSRD	€ 5,900 - € 8,800	€ 6,500	€ 8,000 - € 14,000	€ 14,900
	Total license	€ 21,150 - € 24,050	€ 15,150	€ 18,000 - € 24,000 (Pro Plan)	€ 32,800
	Set-up cost	€ 18,700	Included in SA*	€ 3,600	/

Note: Price exclude discount offer - * CF: Carbon Footprint / SA: Self-Assessment

1: If self-assessment only, price is paid by RG (€ 130 – € 360 / group / year)



Xavier Guimbeski – xguimbeski@tennaxia.com
Victoire Dumont – vdument@tennaxia.com



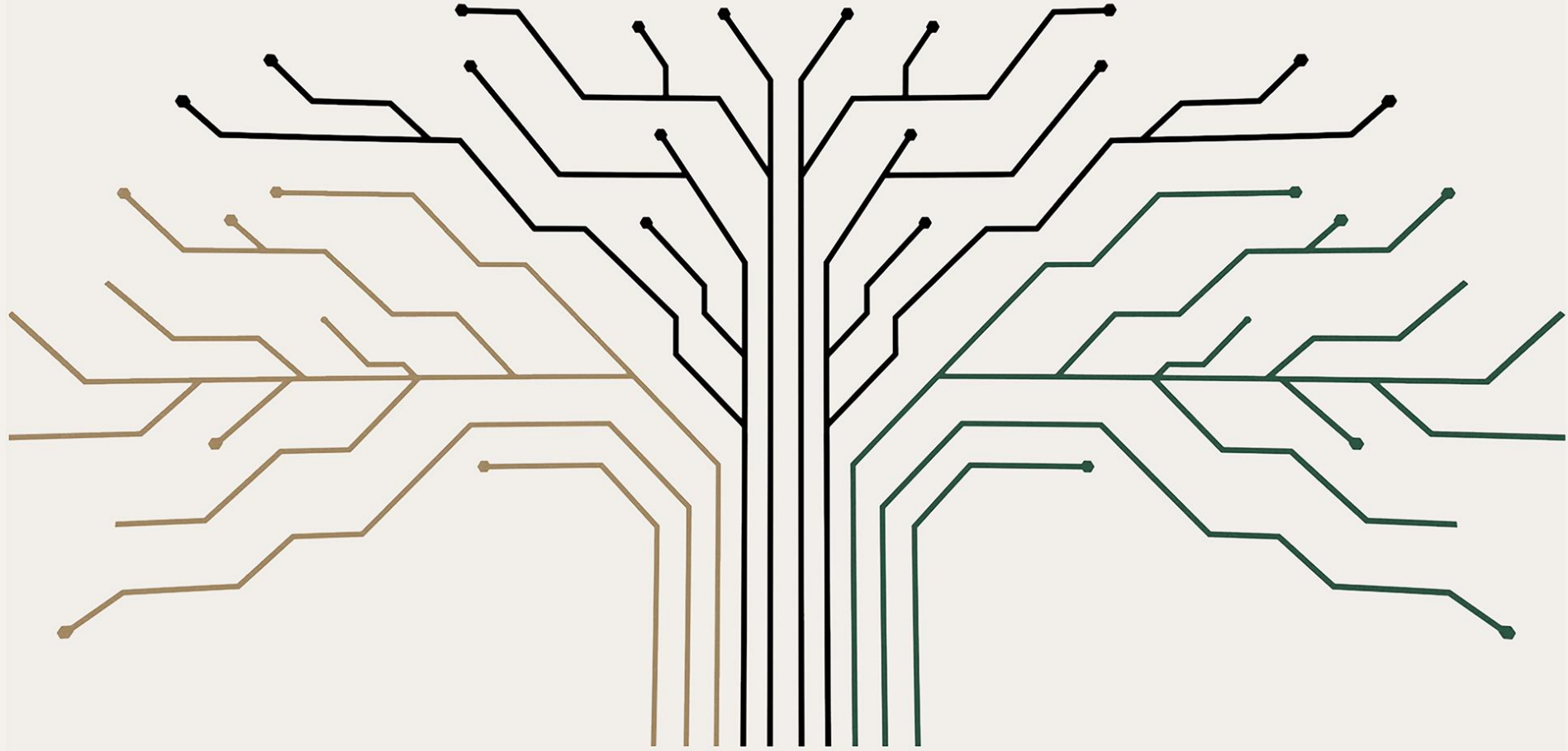
Morgane Lerville – mlerville@sweep.net
René Auty – rauty@sweep.net



Pascaline Bolis – pascaline.bolis@act21.fr
Enzo Bourhis – enzo.bourhis@goodwill-management.com



Louise Rolland – louise@greenly.earth
Edouard Remise – edouard.remise@greenly.earth



**SUSTAINABILITY
TOOLBOX FOR DEALERS**

.....
Thank you
.....